

Learning Community E-News



Sunday, April 28, 2024

Dear Ones,

We're nearing the close of the 2023-24 RE program year! Thanks to each of you for participating. Here's a rundown of important upcoming dates. If you have more specific questions (or ideas about events you'd like to help make happen!), please be in touch.

A PROBABLY NOT QUITE COMPREHENSIVE LIST OF SPRING/SUMMER DATES

After worship in Buchan, **April 28th**—*Love Your Mother Earth Fair*. Lots of fun opportunities for learning and connection. Families get first crack at food promptly at noon!

May 5th—*Regular RE (Together Time)*

May 12th—*Last Day of 7-8th grade OWL RE class*

May 19th—*Last Day of Most RE Classes (no Together Time)*: Last day for preschool through YRUU.

Graduating 8th graders are invited to visit YRUU as an early welcome to high school group. 7th graders are invited to attend 5-6th grade class.

May 26th—*RE holiday*. No classes. Nursery care provided and children welcome in service.

June 2nd—*Ceremony of Child Dedication*: Our worship service will include a dedication ritual for our youngest ones. Contact Leah to be included. *RE holiday*: No classes. Nursery care provided and children welcome in service.

June 9th—*Flower Communion and Bridging*: Our all ages worship service will include a recognition ritual of middle and high school graduates. *Bring a flower* and stay after church for a community celebration in the parking lot next door.

June 16th to June 30th—*RE holiday*. No classes. Nursery care provided and children welcome in service.

July 7th to August 25th—*Summer RE*: Mark your calendar for our summer learning community program for preschool through high school. Details TBA. Contact Leah for some fun ways to help!

August 25th—*Blessing of the Backpacks*: Our worship service will include a fun back-to-school ritual for anyone starting a new class, school, job, project, or life phase.

Love,
Leah

April 28th RE classes

Nursery/Toddlers (A103): A loving, playful space for little ones 6 months to 3 years old. Drop off and pick up anytime. (Rhionne & Levi)

Preschool (A106): I Color Myself Different. (Jody & Sylvia)

K-1st Grade (A200): Earth Day celebrates our wonderful world. (Evie, Sharon, & Kris)

2nd-3rd-4th Grade (B202 & B203): Gratitude as a way to express love. (Robert & Robin, Miranda & Katy)

5th-6th Grade (B201): Volcanos, loneliness, and love. (Christa & Lee)

7th-8th Grade OWL (B302 & B303): Sexual Decision Making: How will you make decisions about sexual behavior? Discuss why teens choose to engage or not to engage in sexual behaviors. Articulate where you are about having sex at this time. Gain self confidence in your ability to make healthy and wise decisions. (Christopher & Summer)

YRUU (A108): Set up for Earth Fair. (Faith & Victoria)

4th-6th Grade OWL - Week 3 (this Sunday)

Lead by Jonah, Christopher & Em (B302)

Bring your own family lunch at 12:15 pm if you like! Class goes from 12:45 to 3:00 pm. This class will cover reproduction, staying healthy, and decisions/actions. You must have already registered to attend; let Leah know if you are interested in upcoming OWL opportunities for any age!

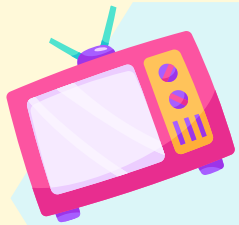


Never Too Late for Gratitude

Thanks to the children, youth, and RE leaders who participated in last Sunday's ritual of appreciation for all our teachers and other Learning Community helpers. If you volunteered in RE this past year and missed out on getting your gift of a home chalice, please stop by the RE Workroom on Sunday and pick one up. We are grateful for you!

12-2:30 pm. 4128 All Ages Love Your Mother Earth Day Fair

Come for music, poetry, art and crafting, seed ball making, and learning about our watersheds, native plants, organic food growing, pruning, climate mitigation policies, and electrification. Bring cash for the YRUU vegan donut fundraiser and other spending opportunities!

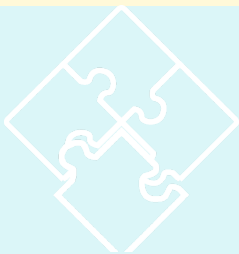


Good Links to Know

Please sign up to bring snacks a few times this year

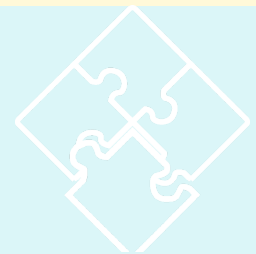
Get the Front Steps, the all church weekly newsletter

Watch the worship service live or during the week



Monthly spiritual theme:

INTERDEPENDENCE



Keep in touch!

Rev. Leah Ongiri (she/her)

Acting Director of Lifespan Faith Formation & Family Ministry

(office) 503.228.6389 ext. 232
longiri@firstunitarianportland.org

