

Learning Community e-News



Sunday, February 4, 2024

Dear Ones,

Our church theme this month is Justice, one of those sprawling topics that shows up for each of us in different ways every moment of life, not only but absolutely in our relationships with our young people.

Seattle artist and illustrator Madeleine Jubilee Saito is known for her poetic comics about climate change and the sacred. She publishes a free monthly comic from which I often draw much personal inspiration. I showed this recent piece of hers to my friend's daughter, which led to a conversation about how beauty and noticing are ways we can honor the fair and true in an unjust world. Maybe it will spark some meaning for you and your family. Here it is, or keep scrolling.

Blessings,

Leah



Parent Community Circles

There's still time to join a new community circle on the second Sunday of the month at 12:30pm.

Sign up for more details.

Are you pregnant? Want to impress some kids?

The K-1 class is seeking a pregnant person to visit their RE class on March 17th. To volunteer (or learn more about the expectations, which include answering questions with the leadership of the RE teachers, sharing a bit about your story, and offering kids the chance to give gentle belly pats), contact Evie.

Love Your Mother: An Earth Fair for All Ages

Save the Date: After church on April 28th

Our Earth Fair Team invites families to learn, share, teach, and participate in From Farm to Food to All Living Things Fair. Understanding and exploring where our food comes from is a powerful practice that helps us enjoy and conserve places, plants, and animals.

Children/youth whose families fill out this form can visit a forest, interview a farmer, cook, contribute art, and lead in other ways. For questions or to get involved, contact Victoria.



13 Salmon Shower Project is open!

**Help us celebrate by stocking the creativity space:
Bring new items to the RE Welcome Desk on Sunday**

**Since our MLK service project got canceled,
stay tuned for a TBA chance to tour the facilities.**

DONATION WISH LIST:

DRAWING SUPPLIES

- Colored pencils
- Markers
- Chalk pastels
- Pencils



PAPER



All purpose drawing
paper (white and
colored)

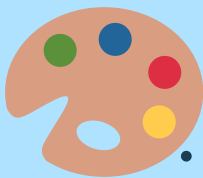
- Painting paper
(white)

CONTAINERS

- Desktop hanging file folders
- Craft storage caddies with
handle
- Storage containers with lids

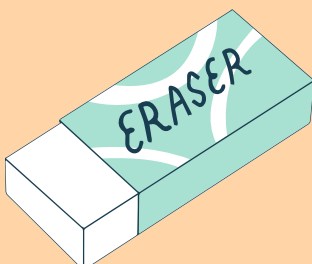


PAINT SUPPLIES



- Acrylic paint sets
- Plastic paint tray
palettes
- Watercolor paint
sets

OTHER SUPPLIES



- Pencil
- sharpeners
- Erasers

February 4th, 2024

Start in the sanctuary for Together Time at 10:30 AM

RE ends at 12:00 PM

Nursery/Toddlers (A103): A loving, playful, and supportive space for our little ones 6 months to 3 years old. You may drop off right at 10:30 and pick up anytime. (Rhionne & Kay)

Preschool (A106): Every child is born with a crown, which is another way to say that we all have value. Our crown will always be with us wherever we go, whatever we do. (Sylvia & Martha)

K-1st Grade (A200): We're painting our box homes; dress accordingly! (Sharon & Kris)

2nd-3rd-4th Grade (B202 & B203): The fourth UU Source Jewish and Christian teachings which tell us to love all others as we love ourselves. Stories about Jesus' life help us explore the concept of community. (Robert & Robin, Miranda & Joachim)

5th-6th Grade (B201): The sometimes awkward topic of dating and the soothing practice of meditation. (Christa & Lee)

7th-8th Grade OWL (B302 & B303): No Together Time; start in classroom at 10:30. Bullying and Bystander Responsibilities: Bullying is often about sexuality. Young teens need to know how to recognize and effectively respond to it, whether they are victims or bystanders. Discuss indirect and direct bullying, debunk myths, and get realistic solutions. (Sierra & Summer, Vivien & Christopher)

YRUU (A108): You picked justice as this month's focus so let's dive in! (Faith & Andrew)

Our neighbors at Shoreline UU in Seattle
are hosting a Youth Con for high school aged youth.
Find out more [here](#).



DOLL HOUSE NEEDED

Our preschool room is in need of a dollhouse upgrade and would appreciate a donation of a new or gently loved one large enough for a classroom community. Please contact Leah if you might have one to gift.

Good Links to Know

Please sign up to bring snacks a few times this year



Get the Front Steps, the all church weekly newsletter

Watch the worship service live or during the week



Monthly spiritual theme:
JUSTICE



Keep in touch!

Rev. Leah Ongiri (she/her)

Acting Director of Lifespan Faith Formation & Family Ministry

(office) 503.228.6389 ext. 232
longiri@firstunitarianportland.org

